



Cell: +263772223646
land: +263 261 214 6579

Tony Waite Organisation
HIV and AIDS Services

Box 264
Kariba
Email: tonywaite@mweb.co.zw
www.tonywaiteorganisation.com

Stand Number 3367
Jumbo Shopping Center
Nyamhunga 2
Kariba
Zimbabwe

QUARTERLY REPORT OCTOBER- DECEMBER 2021

INTRODUCTION

Tony Waite Organisation is Private Voluntary Organisation which operates in Kariba urban and rural. The organisation's mission is to create a knowledgeable, empowered community where people are able to support each other in HIV AIDS, non-communicable diseases, pandemics and other developmental issues. The organisation therefore coordinates with other stakeholders and partners in Kariba and beyond in program formulation, implementation, monitoring and evaluation which helps in the effectiveness and efficiency of programs as there is diverse perspectives invested before a program is implemented. Tony Waite Organisation works hand in glove with the community through its trained community carers who provides adherence support to people living with life threatening conditions including HIV and AIDS, Cancer, TB, Asthma and diabetes among other chronic conditions as well as Orphans and Vulnerable Children (OVC). Tony Waite Organisation also boosts in its community linkage to service providers which has seen women benefiting from the economic strengthening projects supported by Zimbabwe Women's Micro Finance Bank.

PROJECT TARGET

The organisation envisions a holistic and robust service to the community whereby men and women, boys and girls have equal access to services despite gender or ethnicity. The Organisation through the Gender Transformative Approach ensures that different gender groups have equal access to productive resources and it seeks to address norms and values which have placed women and girls at socio-economic disadvantage and susceptible to economic deprivation and HIV AIDS, Gender Based Violence among other social evils. Tony Waite also implements programs using the community systems approach whereby the already existing community structures are utilised for program relevance and sustainability. The organisation also employs the Actor Oriented Approach in its programme and projects implementation so that projects and programme beneficiaries rationality is considered. The main focus of the projects is mainly to enhance people's access to services and information to improve their household income, nutrition and engage them as active participants in development.

OBJECTIVES

- To identify needy children through community volunteers
- To improve household income, food security and health
- To provide adherence support to clients
- To provide comprehensive scholastic support and psychosocial support
- To coordinate with other stakeholders.

PLANNED ACTIVITIES

Adherence support, Life skills training, M and E of livelihood projects, Support group and youth club meetings, Coordination meetings, outreach for hard to reach areas, Marketing of Kapenta, distribution of IEC materials, in school outreaches, Livelihoods stakeholder review

SERVICES OFFERED TO OVC

	MALE	FEMALE	TOTAL
Number of new OVC provided with school related assistance	3	4	7
Number of OVC provided with school fees	62	75	137
Number of OVC continuing to be provided with school related assistance	457	550	1 007
Number of new OVC provided with medical support	0	0	0
Number of OVC started on ART	0	0	0
Number of OVC continuing on ART	61	68	129
Number of new OVC provided with nutritional support	0	1	1
Total number of OVC continuing to be provided with nutritional support	838	895	1 697
Number of OVC provided with PSS/counseling	35	40	75
Number of OVC receiving life skills	288	371	599

Number of OVC receiving orientation in care giving skills	0	0	0
Number receiving child rights education	139	151	290
Number of OVC assisted to acquire birth certificates	2	1	3

Number of children paid fees for has decreased due to fees hikes by all schools.

Below is a table of patients seen for Adherence Support

NEW CLIENTS	MALE	FEMALE	TOTAL
CATEGORY			
BED RIDDEN	1	3	4
AMBULATORY	0	0	0
WORKING	0	0	0
TOTAL NEW CLIENTS	1	3	4
TOTAL CLIENTS SEEN	MALE	FEMALE	TOTAL
BED RIDDEN	0	5	5
AMBULATORY	1	2	3
WORKING	89	100	189
TOTAL	90	107	197
TOTAL CLIENTS SEEN ON ART	76	87	163
NUMBER OF FACILITATORS PROVIDING SERVICE AT HOME	49	122	171
FACILITATORS PROVIDING SERVICE	1	25	26
NUMBER OF CHILDREN SEEN	13	12	25
NUMBER OF CHILDREN SEEN ON ART	12	12	24
NUMBER OF DEATHS	4	1	5
HOME VISITS CHILDREN	62	54	116
HOME VISITS ADULTS	155	266	415

TOTAL HOME VISITS	214	317	531
--------------------------	------------	------------	------------

Looking at the table above there are 5 deaths, 3 (2M 1F) died of cancer (lung cancer and breast cancer respectively), one male youth died of TB, one with 2 months post TB treatment.

1 IDENTIFICATION OF NEEDY COMMUNITY MEMBERS

The organisation through trained community carers is continuing to identify orphans and vulnerable children, People Living with Life Limiting conditions including HIV in need of care and support including those who are in need of birth certificates, legal, food assistance and others in need of people in need of economic strengthening projects. Referrals from other stakeholders for food, scholastic, legal, birth registrations and counseling has continued. This has seen a total of 10 (3M 7F) children being referred for birth Certificates during the period under review. 7 (3M 4F) who were school dropouts were assisted to enroll back to school and 3 (1M 2F) got their fees paid. A total of 3(2M 1F) children were supported with infant feeding program, 2 are from Kasvisva whose mother’s succumbed during birth and the other one is from Kariba urban ward 3 whose mother ran away due to unknown circumstances.

2. TO IMPROVE HOUSEHOLD INCOME, FOOD SECURITY AND HEALTH

Tony Waite Organisation has continued supporting a total of 435 (220M 215F) with sustainable livelihood projects. These projects include Internal Savings and Lending, Nutritional gardens, poultry projects and goat rearing projects as well as the bread baking project. The main thrust of the Economic Strengthening Projects is to:

- create an enabling environment for women to become active participants in development
- to reduce dependency by women as well as to improve their income and family nutrition through their meaningful engagement in development.
- to enhance women and girls’ income and family nutrition through enterprising.

Internal Savings and Lending

A total of 2 groups (Tashinga Money Group and Virtuous Women) of 14 women have managed to complete their ISAL cycles expecting to resume in January 2022. Both groups have managed to archive their set milestones as members have managed to build small sustainable projects through the funds they raised from the savings. Despite small capital contributions for Tashinga Money Group the members have managed to build small sustainable income generating projects ranging from poultry and clothes buying and selling.

The virtuous Group which was made up of women in small scale businesses has managed to share their spoils from their savings from March 2021 to December 2021. They shared an amount which some are using to finish their building projects, adding value to their already existing businesses whilst others are aspiring to venture into new businesses. During an interview with the Programmes Officer one member shared that the group was successful as there was no conflicts involved and whenever there was misunderstanding members employed conflict resolution skills they acquired during a Business Management Training facilitated by the Programmes Officer. Another member also added that through lending from the group she has managed to beef up her fashion business which was affected by COVID-19 induced lockdown, she added that the group become a micro bank from which they could access loans conveniently hence they aspire to continue with the savings and lending in 2022. Another member also added that despite the savings acting as a micro bank the member has managed to provide for her family and she became an active participant in family finances, a longstanding dream she harbored time immemorial.

Goat rearing project

A total of 4 goat rearing projects are being supported by Tony Waite Organisation benefiting a total of 32 (5M 27F). The projects include a project for People Living with Disabilities in Chidyamugwamu with 10 (4M 6F) members, 8 women from Manhanga communal lands, 11 women from Siakobvu from Munamata and villages respectively. The project beneficiaries have continued rearing the goats and are expecting to start selling the goats in the 2022 first academic calendar so that they can cater for their children's educational needs as it was the main thrust of venturing in the project. In Kariba Rural pastures for small livestock are plenty as although water is a challenge especially during spring which usually experience sporadic rainfalls. However, the areas are tsetse infested and as a result members are vaccinating their livestock against nagana among other animal diseases. The members were also conscientised to venture into Internal Savings and Lending so that they can buttress their project as a certain percentage will be allocated towards project sustainability thus for animal medications among other animal husbandry expenses.

Piggery project and hardware projects

The piggery project has continued making landslides as the beneficiary has started crop production and poultry project from the proceeds of piggery. He has also managed to procure the water cut which was ferried to the project site and has been used to ferry water because he used to rely on hired water cuts to ferry water. Two sows are expected to win in January. The beneficiary has managed to strike deals with some butcheries in Kariba Urban but however stiff competition with Koala Park is presenting challenges although alternatively relying on walk in clients. Crop (maize and soya beans) production has buttressed piggery project through reduction of production costs especially feed as he now has to buy concentrate only. The hardware project has been registered as **Real Deal**

Hardware. During a monitoring visit the beneficiary highlighted that he is still working on percolating the markets through creating brand loyalty.

Chicken rearing project

The organisation supports economic strengthening projects with the aim of engaging women as active participants in development as well as eradicating economic dependency by women. A total of 4 chicken rearing projects, 2 in Kariba Rural in Manhanga (ward 8) and Siakobvu (ward 4) respectively and the other 2 in Kariba urban ward 2 are being supported and monitoring is continuing with the one in Siakobvu, Munamata Village being monitored by Mrs Machinga a rehab officer at Siakobvu Hospital. Members of the project in ward 2 of Kariba urban are selling eggs, chicks and cocks as they are constructing their houses.

RESILIENT FAMILY PROGRAMME BY ZIMBABWE WOMEN'S MICRO FINANCING BANK

Following a wave of novel COVID-19 pandemic which has bedeviled the whole world at large, there has been an outcry by people for being vehemently affected by the virus. Movement restrictions, closure of borders and schools presented a unique lifestyle which has never been experienced post-independence in Zimbabwe. Therefore, people were forced to adjust to the COVID-19 lockdown restrictions which forced people to stay indoors, stay within their districts and or villages with fears of widespread of the virus to uncontrollable levels. Hence Tony Waite Organisation contacted a series of researches through Focus group discussions and participant observation to determine the extent of damage on the community by the lockdown restriction. The findings of the research concluded that livelihoods succumbed to the lockdown restriction specifically due to movement restrictions and closure of borders as people depended much on the neighboring country Zambia for cheap consumables in Kariba. It is therefore after the organisation has shared the findings that Zimbabwe Women's Micro Finance Bank determined to partner Tony Waite Organisation in a bid to assist women to bounce back to their businesses.

ZWMB has managed to support a total of 7 groups benefiting a total of 34 women and 2 individual women with poultry projects and the first round of the funding has lapsed. After the lapse of the first disbursement the Banks' national and provincial team visited project beneficiaries to determine the extent to which the first round has enhanced their livelihoods. Project beneficiaries shared their experiences but many members highlighted that their projects were affected more by birds' deaths with an average of 20% deaths per each group and members were blaming absence of AGRITEX services in Kariba urban as they depend on one doctor (animal specialists) from Karoi but comes erratically to Kariba. Higher temperatures were also blamed for fuming poultry dieses although this was based on established assumptions. Therefore, members suggested resuming poultry in January when

temperatures drops. Members concurred on the positive contribution of the funding as some have managed to sell their birds at a profitable price and managed to repay the loan amount and share some spoils thereafter.

NUTRITIONAL GARDENS

The organisation is supporting a total of 4 nutritional gardens benefiting a total of 184 (54F 130F) namely Padare garden in Mahombekombe, ZIHOFE garden in ward 2 Kariba urban and Charara garden for People living with HIV as well as Charara primary school for OVC at the learning institution. The goal of nutritional gardens is to improve household income and food security. The Charara gardens are not fully functional with Charara community garden's energizer not functional and wild animals are plundering their crops. Members at Charara community garden were encouraged to repair or buy another energizer so that they continue with farming.

Members of Padare and ZIHOPFE nutritional gardens are selling vegetables like tomatoes, carrots, spinach, lettuce and cabbages to the local market. It is important to note that the project is archiving its goal as members are managing to access nutritious vegetables and are having surplus for sale. They are managing to meet household costs like water and electricity bills as well as paying school fees for their children. It is prudent to highlight that some members of nutritional gardens are people living with life limiting conditions therefore need for nutritious food.

Nutritional Support.

Tony Waite Organisation has continued coordinating with local stakeholders and referrals for food assistance continued. During the 3 months three families were supported with nutritional support benefiting a total of 20 (9M 11F). Among the families which were supported is a family from Chawara whose father has TB received mealie meal, cooking oil and kapenta. Another family was supported from the C and C grant and another OVC continued benefiting from an individual donor. A total of 4 infants continued to benefit from infant feeding program.



PSYCHOSOCIAL AND SCHOLASTIC SUPPORT

Tony Waite Organisation has continued supporting children and youths in need of care and support. During the quarter a total of 579 (294M 285F) were reached with psychosocial support. Among them 94 (42m 52 F) benefited from clothes distribution and 149 (80M 69F) benefited from the Christmas parties which were sponsored by Heartveld Adventures and as well as Caribbea Bay and C and C.

A total of 84 (11M 71F) were reached through youth and support group meetings. The organisation also has a functional youth group with 106 (56M 49F) where motivation, decision making skills, carrier guidance and mental health issues are discussed.

Youths during the meetings highlighted that Kariba is small community with very limited resources which can entertain the youths therefore they opt to visit the lake side and have fun. Others added that due to the fact that there are no activities engaging the youths some are taking sex as source of entertainment therefore they were appealing for youth friendly activities so that they spend most of their time engaged. Youths out of school and young women appealed to the organisation for income generating projects so that they can be able to meet their daily basic needs, this will help reduce promiscuity as they highlighted that some unwanted and unplanned pregnancies are mainly caused by financial deprivation therefore need of economic strengthening projects.

Youth and support groups at the organisation's offices



OVC CHRISTMAS PARTIES

Tony Waite Organisation has continued with psychosocial support for Orphans and vulnerable children in Kariba through Christmas parties where children from different wards and families learn life skills, share life experiences with each other and celebrate remembering the birth of Jesus Christ. Special recognition goes to Heart Veld Adventures for coordinating for the Christmas party, Koala Park and Murenzvi who donated chicken, Crispy Fresh who supported with ice cream and juice, Banana farm with Bananas, Eyes for Zimbabwe with presents, Sonya, Sunera, Faith, Louise, Lyn, Nikki and Leona with cup cakes and Sue, Blossom, Daryl, Cher and Jenny with packing of the presents.

The party benefited a total of 120 (60M 60F) from 3 wards of Kariba urban. It is important to note that the 2021 Christmas party benefited OVC from 6-16 years who are also school dropouts.

Presents



Gaming



Lunch



Presentation of gifts



OVC Christmas party supported by Caribbea Bay and C and C benefited a total of 29 (14M 15F) OVC who are under Tony Waite Organisation scholastic support at Mahombekombe Primary School. It was all joy for the children as they mingled with the Caribbea Bay Human Resources manager and other stakeholders who also graced the occasion. See pictures below of the party

Children arrival



life skills training



HR Manager distributing food packs



Scholastic support

A total of 137 (62M 75F) Orphans and Vulnerable Children got their fees paid at Nyanhewe, Mahombekombe, Nyamhunga Primary, Mahombekombe and Nyamhunga Secondary Schools. Among them 77 (36M 41F) received cloth face masks from the organisation *See photos below.*

Nyanhewe

Nyamhunga

Mahombekombe Primary

Mahombekombe Secondary



Mahombekombe elderly clothes distribution & Nyamhunga elderly clothes distribution



4) MEDICAL SUPPORT

Tony Waite Organisation envisions a holistic approach service to people living with difficult circumstances including People Living with HIV and TB, Diabetes and cancers through adherence support programme and palliative care. During the quarter a total of 1 075 (483M 592F) received SRHR education. The number reached comprises of people reached through the youth and support groups, youth Whatsup group and others reached by community carers through the adherence support programme and ward meetings. A total of 3 (1M 2F) got TB adherence support from trained community carers and managed to motivate 8 (M3 F5) to get TB screening and know their statuses. Elimination of Mother to Child Transmission of HIV towards the 2030 target of reaching to zero new HIV infections has remained the organisational goal as it contributes to Sustainable Development Goals and they have encouraged male involvement in EMTCT and a total of 40 couples got tested.

Cases of early child marriages have been constantly increasing each day and as a result Tony Waite Organisation partnered with the Dutch Embassy campaigning against early child marriage. Early marriage is said to be a harmful practice that denies girls their right to make vital decisions about their sexual health and well-being and it forces them out of education and into a life of poor prospects, with an increased risk of violence, abuse, ill health or early death. Therefore there was an increased number of school dropouts due to child marriages. It is critical to highlight that the Anti-child marriage SRHR programme was replicated by National AIDS Council in the district whereby the community systems approach which was also implemented by Tony Waite Organisation was used to address the challenge of early child marriages in the district. The Executive Director also facilitated the training for community champions who will be implementing the programme at grassroots level.

WHAT WOMEN WANT PROGRAMME

The organisation partnered with White Ribbon Alliance to carry out a What Women Want Campaign (WWW) which focuses on determining the requests by women in terms of Reproductive and Maternal Health. The organisation used Focus Group Discussions and one on one Interview to collect data for the campaign. The campaign was carried out from diverse population from Kariba Urban, Rural covering (Makande and Charara Estate) fishing camps covering Chalala, Nyaodza and Fothergirl. A total of 2 352 responses were collected from 2 352 participants. The campaign reviewed some fundamental requests from women in terms of reproductive and maternal health in Kariba District and from the responses of

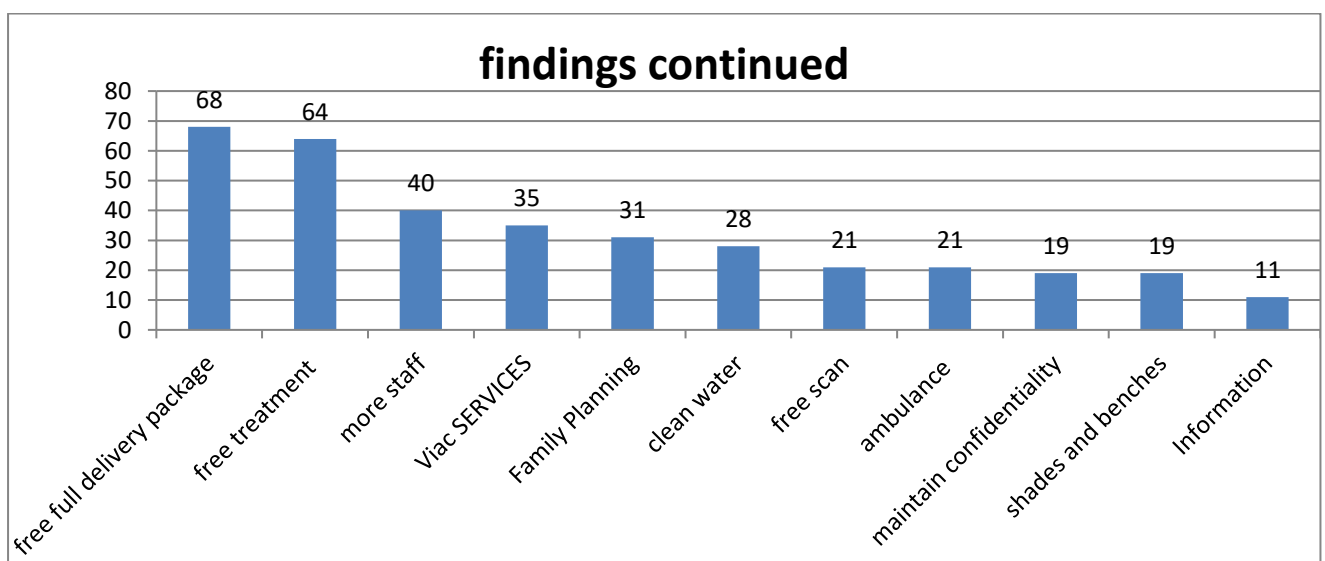
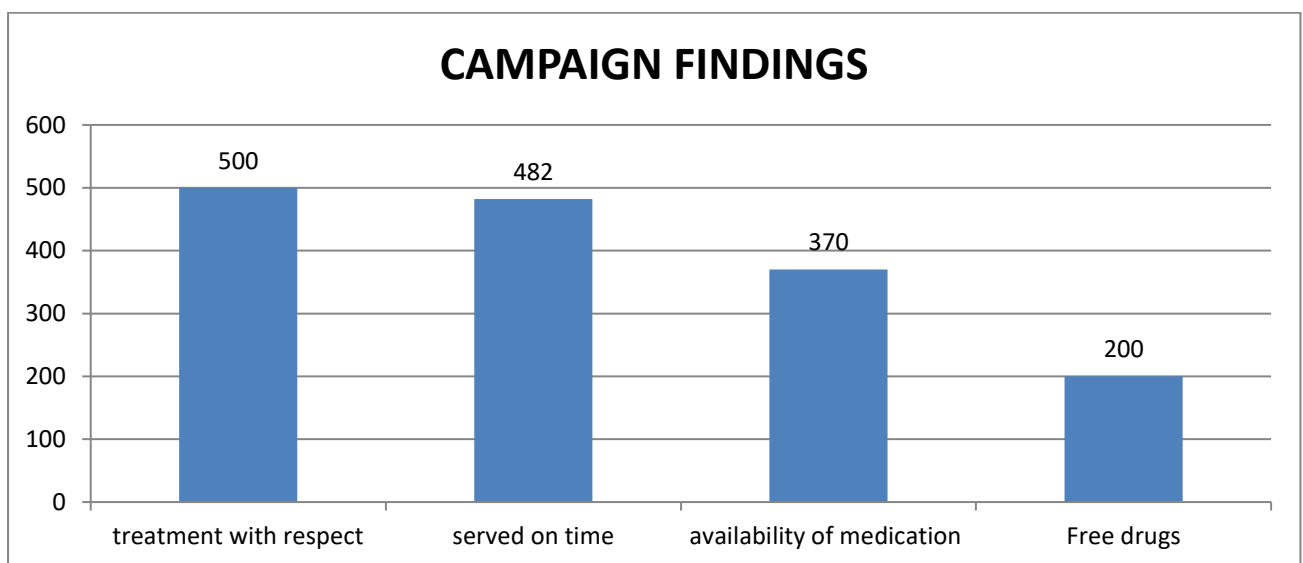
note is request for treatment with love and care from health practitioners, to be served on time, availability of free medicines at health institutions, availability of free full delivery packages, VIAC services in rural areas, expansion of Nyamhunga and Mahombekombe clinics and clean and safe water in Fishing camps.

Fothergill women with their responses

Staff do interviews at Nyadza fishing camp

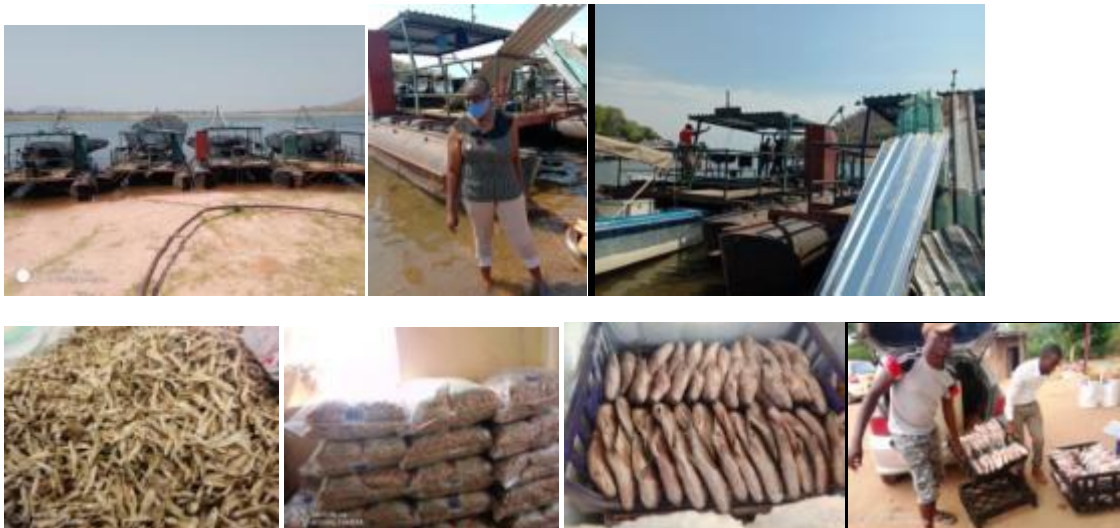


The graphs below are an illustration of the findings.



KAPENTA LINKAGE PROJECT

The organisation has continued with the Kapenta fishing processing and marketing project employing a total of 25 (15M 9F) employees. The number includes both full time and part time employees. Rig maintenance and repairs continued during the period under review. Bad weather and equipment breakdowns affected fishing during the month. Fish supplies were also affected by bad weather fewer quantities were bought during the month Marketing of fresh and dried fish has continued.



Cold chain installation

Installation of blast fans still outstanding and continue to communicate with supplier. The delivery truck is under branding.

Finished cold rooms and solar system

Student interns operating computers using solar power



6) TO IMPROVE COORDINATION:

Tony Waite organisation continues with stakeholder coordination in program design, implimentation, monitoring and evaluation. A plethora of meetings and colloquiums were attended during the reporting period these include WCoZ Barometer Launch, UNDP training for CSOs to minimize fraud and sexual harassment, ZESN and WCoZ quota systems meetings. Moreover Tony Waite has also become a member of the White Ribbon Alliance in carrying out What Women Want Campaign which focuses on understanding the experiences of women in relation to their access to quality reproductive and maternal health services from local clinics. During the reporting period the organisation also attended stakeholder Community Working Group on Health workshop focusing discussing critical issues

surrounding access to quality health services as well as the working groups meeting facilitated by WCoZ. Tony Waite Organisation held a youth SRHR and GBV meeting with youths from 15- 24 years at the organisation’s offices and the event was attended by other stakeholders like News Day and Patsaka trust who also took the opportunity to advertise their Kasambabezi Radio Station. Patsaka Trust Executive Director Mr Chirinda pledged to support 2 youths from the present participants who will be trained in media and radio presentations and will have a chance to work at the radio station or might be linked to other sister radio stations around Zimbabwe, he also pledged to support 4 other youths in radio presentations although they will get the basic training in radio presentations. **See pictures below**

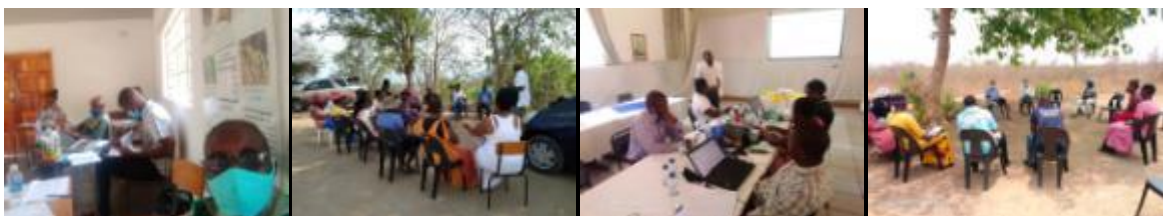


Child line Zimbabwe also held a meeting on parental guidance at the organisation’s offices. During the quarter the organisation managed to hold a workshop to sensitise community leaders and networkers on child marriage as well as the National AIDS Council community networkers training in Karoi. The Executive Director also participated in the What Women Want (WWW) Campaign television interview, FAO proposal review, WFP-World Vision Stakeholder inception meeting, MIPA meeting, Nyadza Sub Catchment council meeting, ZKPA and NEC meetings. Child line Zimbabwe is utilising the organisation’s premises

SHR, GBV and ANTI-child marriage campaign WWW Campaign television interview DCPC ZRBF meeting



FAO PROPOSAL REVIEW ZWMB VISIT ZAN MAST WEST MEETING DISTRICT MIPA MEETING



Tony Waite Organisation has also joined other stakeholders to commemorate the 365 Days of Activism Against Gender Based Violence marches with Kariba Gender Committee in Mahombekombe and WCoZ 365 Days of Activism march from Jumbo Shopping Centre to

Kariba Main Market, Media Awards which were sponsored by Tony Waite Organisation and Sunset Cruises, the event was held for the first time to honor hard work of media personalities in Mashonaland West Province.



Media Awards

Stakeholder Boat Cruise



During the quarter the organisation has been awarded a donation from ZIMRA Chirundu of clothes, shoes, biscuits, snacks and sweets. The donation goes a long way in helping the organisation to implement its mandate especially in psychosocial support as people continues visiting the organisation looking for clothes donations. The biscuits, sweets and snacks have helped the organisation to support its youths and support group meetings as youths prefer meeting and have refreshments after the meeting.

Report compiled by

Ellen Vengere

Executive Director